

Interreg - IPA CBC
Romania - Serbia



Adventure BANAT'S MOUNTAINS TRAILS

Cornereva-Cerna Vally-Baile Herculane

Cooperation beyond borders



Attractiveness for
sustainable tourism

www.romania-serbia.net



BANAT GREENWAY CORRIDOR
Connecting People to Nature and Culture.
www.banatgreenway.com



About BANAT

The Banat is a geographical and historical region in Central Europe currently divided between three countries:

- **the eastern part** lies in western Romania (the counties of Timiș, Caraș-Severin, Arad south of the Mureș, the western part of Mehedinți),
- **the western part** in northeastern Serbia (the Serbian Banat, mostly included in Vojvodina, except for a small part included in Belgrade Region), and
- **a small northern part** in southeastern Hungary (Csongrád county).



The Banat is a part of the Pannonian Basin bordered by the River Danube to the south, the River Tisa to the west, the River Mureș to the north, and the Southern Carpathian Mountains to the east.

Project BANAT GREENWAY KORIDOR Connecting People to Nature and Culture

"Banat Greenway Corridor" is a linear green corridor of long-distance with thematic local trails, specific tourism route reserved for non-motorized users, as a new distinct regional tourism product for leisure and cycling tourism, connecting people to nature and culture heritage, with integrated new innovative services and information.



Hidden treasure between the Banat mountains and the Banat plain

The project area is covering the Caras-Severin County and South Banat District of the Romanian-Serbian border area through the linear green corridor that links the Banat Mountains (RO), Danube and Banat - Deliblato Sands (SRB).

Interreg - IPA CBC
Romania - Serbia



This project is financed EU under the INTERREG IPA CBS program Romania-Serbia. Project includes actions to drive public-private collaboration and the integration of all tourism stakeholders through the innovative and complementary services and information, setting of Banat Greenway cycling friendly service network and certifications according to international standards and promote new, authentic experiences through the use of new (IT) technologies in rural areas along the Banat Greenway Corridor.

4 thematic interactive local trails on the **Banat Greenway** Corridor



1. **Explore - Naive Art trail** - connect UNESCO "World editorial center devoted to naive art", galleries, ethno houses and museums and resting place in Kovacica, Uzdin and Padina villages.



2. **Experience - Via Delibaticum with Deliblato Sands Wine trails** - countryside, nature & testing experience in Deliblato Sands region - "the European Sahara", an UNESCO tentative list of Protected Natural Heritage, Dolovo - West gate of „Deliblato Sands“ and historic viticulture regions, vineyards of Deliblato Sands area.



3. **Discover - Danube in Banat trail** - nature and culture along the left side of Danube in Banat, in Serbia and Romania.



4. **Adventure - Banat's Mountains trails** - connects Cornereva villages, National Park Domogled –Cerna Valley and Baile Herculane, historical sites and rural environment of special natural and cultural value.

Cerna Valley totally integrates itself into the mountain landscape and separates two rows of mountains which are different in composition and landscape.



BANAT GREENWAY CORRIDOR
Connecting People to Nature and Culture.
www.banatgreenway.com





BANAT
GREENWAY

www.banatgreenway.com

Adventure
BANAT'S MOUNTAINS TRAILS
Cornereva - Cerna Vally - Baile Herculane

CORNEREVA

Cornereva village is situated in Caras-Severin, this county is located in the southwestern of Romania.

Cornereva include 40 villages or hamlets, which are spread over the valleys and hills Depression, sometimes, even lower peaks of Cerna Mountains. Cornereva is at 105 km from Resita, residence of Caras-Severin county and 30 km from Baile Herculane.

The main communication routes, Cornereva is bound by County Road Tergova - Cornereva - Plugova, the connection at both ends in E 70.



Cornereva is located near the tourist attraction areas : Lake of Poiana Rusca Tergova, Baile Herculane, Cerna Mountains and Mountains Tarcului.

Richness and rarity of natural phenomena: geomorphological, speleological, floristic, naturalist and wildlife drew attention to the existence of natural reserves:

- Reserve launa - Craiova in municipalities Cornereva and Mehadia (1545,1 ha)
- Reserve Belareca the villages Cornereva and Mehadia (1665,7 ha)
- Ion Barzoni cave in Cornereva (0,1 ha)

Cornereva village tourism potential is natural landscape beauty of Cerna Mountains, opportunity to fish the rivers of the radius of Cornereva, where you can fish for trout and barbel and the opportunity to practice hunting, as common Cornereva has an area of 27454 hectares of woods and many attractions of natural and cultural-historical heritage.

We are waiting for you to discover this well-spoken commune by nature and through extreme sports, such as: Enduro, Paragliding & Mountain biking.





DOMOGLED - CERNA VALLEY NATIONAL PARK

Location: Romania - Caraș-Severin County, Gorj County, Mehedinți County

Coordinates: 45°05'35"N 22°37'26"E. **Area:** 61.211 hectares.

By road: national road DN6, European road E70.

FACT:

- Domogled - Cerna Valley the biggest National Park in Romania having 61.211 hectares;
- Natura 2000 site;
- Cerna Valley characterized by a unique geological phenomenon - Cerna fault - with Jurassic calcareous rocks.

GENERAL CHARACTERISTICS

The Domogled-Cerna Valley National Park is a protected natural area developed to protect and preserve the ecosystems as well as to promote and foster the recreational activities.

This national park is also a Natura 2000 site - being part of the network of protected natural areas in the European Union. The endangered habitats and species within these areas are protected

and preserved based on the Directives on Habitats and (Wild) Birds.

Two Natura 2000 Sites are overlapped in the Domogled-Cerna Valley National Park:

- ROSPA0035 Domogled-Cerna Valley - protection of wild birds;
- ROSC10069 Domogled-Cerna Valley - protection of the habitats and species of Community interest.

Domogled - Cerna Valley National Park has 11 natural reserves.

These are: Domogled, Coronini - Bedina, Iauna - Craiova, Belareca, Ion Bârzoni's Cave in Caraș-Severin County; Stan's Peak and Teșna Valley in Mehedinți County, and Piatra Cloșaniilor (including Cloșani caves and Cioaca cu Brebenei), Ciucevele Cernei, Martel Cave, Corcoaiei Gorge in Gorj

County. Among these, three reservations are located on the administrative territory of Cornereva village, namely: Iauna - Craiova, Belareca, Ion Bârzoni Cave.

Touristic objectives in the Domogled-Cerna Valley National Park

- **Rich flora and fauna:** submediterranean species (flowering ash, hornbeam, Eurasian smoketree, lilac, ivy, Turkish hazel, Black Pine of Banat);
- **Astonishing panoramas** with calcareous landscapes;
- **Mesozoic calcareous mountains** with the Black Pine of Banat;
- **Moara Dracilor (Devil's Mill)** - located in the Teșna reserve, the water mill's wheel spins counterclockwise, this is the reason for its name;
- **Cheile Corcoaiei (Corcoaia Gorges)** - major carstic touristic attraction, whose appearance is explained by the legend of the mythical hero Ioan Iorgovan, who split the mountain in two with his sword;

• **Hamlets** - located in the Cerna Mountains, where there is a possibility to connect with the local culture, traditions and traditional way of life in harmony with nature;

- **"Piatra Pușcată"** (The Shotted Stone) - it is maintained the old border guard trail from the Austro-Hungarian Empire, carved in a cliff, and in this area there are also two thermal water springs on the right side of the Cerna river;
- **Cerna's springs** - it is considered the most powerful stream in Romania, having 1,5-1,6 cubic meter flow rate per seconds;
- **Caves** - more than 400 caves including thermal caves which are unique in Romania and very rare on the globe; where the climate conditions are similar with the ones in the tropical climate, with the air temperature between 350-450°C;
- **Waterfalls** - spectacular ones like, "Vânturătoarea Waterfall" - the water descends from 40 m high and "Cociu Waterfall" - the water descends from 120 m high and it is considered the highest waterfall, after some writings.



Banat's Black pine



PREVOD PREVOD



PREVOD PREVOD



Vânturătoarea Waterfall



www.banatgreenway.com

BAILE HERCULANE - "Gift of the gods"

The Baile Herculane is a town in Romanian Banat, in Caraș-Severin County, situated in the valley of the Cerna River. Herculane Spa resort is located in the south-west of Romania, at an altitude of 168 m, 25 km from the border with Serbia and is part - Cerna Valley National Park Domogled.

Herculane resort is one of the oldest spas in the world, with an old attested over 1850 years.

During the Roman civilization, Cerna Valley resort was an important attraction for aristocatia ancient Rome. Impressed by the extraordinary healing power of sacred water in the Cerna Valley, the Romans arrived in Dacia have a dedicated spa cult of Hercules into the ward.

The Romans have left many remains: aqueducts, baths, statues, coins, votive taboo high as signs of gratitude to the gods for healing. It is worth to mention here that in 1999, the Roman baths contained in the monumental Roman building of the hotel have been restored after 2000 years, the tourism so that visitors can follow the treatment rooms have spa on the same terms as governor of province, the Roman general Marcus Aurelius Pius.

After 1718 begins the modern history and contemporary Herculane within the Austrian Empire. From 1736 begins reconstruction and modernization of bathrooms, access roads, building guards Banat here most buildings in the resort, which bears the imprint of Austrian Baroque impressive. The resort is accessed over time by great personalities, including: Emperor Joseph II, Emperor Francis I and Empress Carolina, Emperor Franz Joseph and Empress Elisabeth, famous Sissi.



City entrance
photo Alex Strugariu



Baile Herculane, Neptune

Two millennia of continuous existence Herculane resort was favored by miraculous efficacy of thermal springs, is considered a "gift of the gods" and the resort's picturesque setting in a valley sheltered by mountains, a unique beauty.

Rich diversity of high and methods of treatment from traditional spa cure at different methods of physio and electrotherapy, massage, acupuncture, etc., recreation and entertainment, restaurants, bars, summer terraces, swimming pools with thermal water, sauna and opportunities for hiking and trips to resorts and Cerna Valley, is attraction for visitors Herculane resort.



Hercules statue

Legend has it that the weary Hercules stopped in the valley to bathe and rest. Six statues of Hercules from the time have been discovered. A bronze replica of one of them was installed in the town center in 1847. Hercules's statue presents a bronze sculpture the hero dressed in the skin of the lion Nemeia, holding a club on the shoulder.



Baile Herculane, Caras-Severin



Banat's Black pine above Baile Herculane

Adventure BANAT'S MOUNTAINS TRAILS

- Banat's Mountains trails - connects Cornereva villages, National Park Domogled - Cerna Valley and Baile Herculane, historical sites and rural environment of special natural and cultural value.

Tourist trail:

Baile-Herculane - Vanturatoarea Waterfall - Cicilovete Meadow

Mountain massif: **The Cerna Mountains**

Route type: **Connection route with the ridge route of the Cerna Mountains**

Route marking: **Red cross** - Length in km: **3,7** - Slope difference: **934 m**

Brief description of the trail:

The path follows the red cross marking. In some areas, the path has been consolidated with massive rocks and used by the Romanian border guards who used to patrol on the former border (which reminds us of the Great Union of 1918).

After several wild and beautiful serpentine, the path becomes more difficult to climb, but, in the end, the efforts made to

reach the peak are fully rewarded by the image of the "Vanturatoarea" waterfall, which is approximately 40 m high. However, the path is far from stopping here: leading you behind the water curtain, it guides your steps above the waterfall to a small rocky plateau where the fabulous landscape of the **Mehedinti Mountains** takes your breath away.

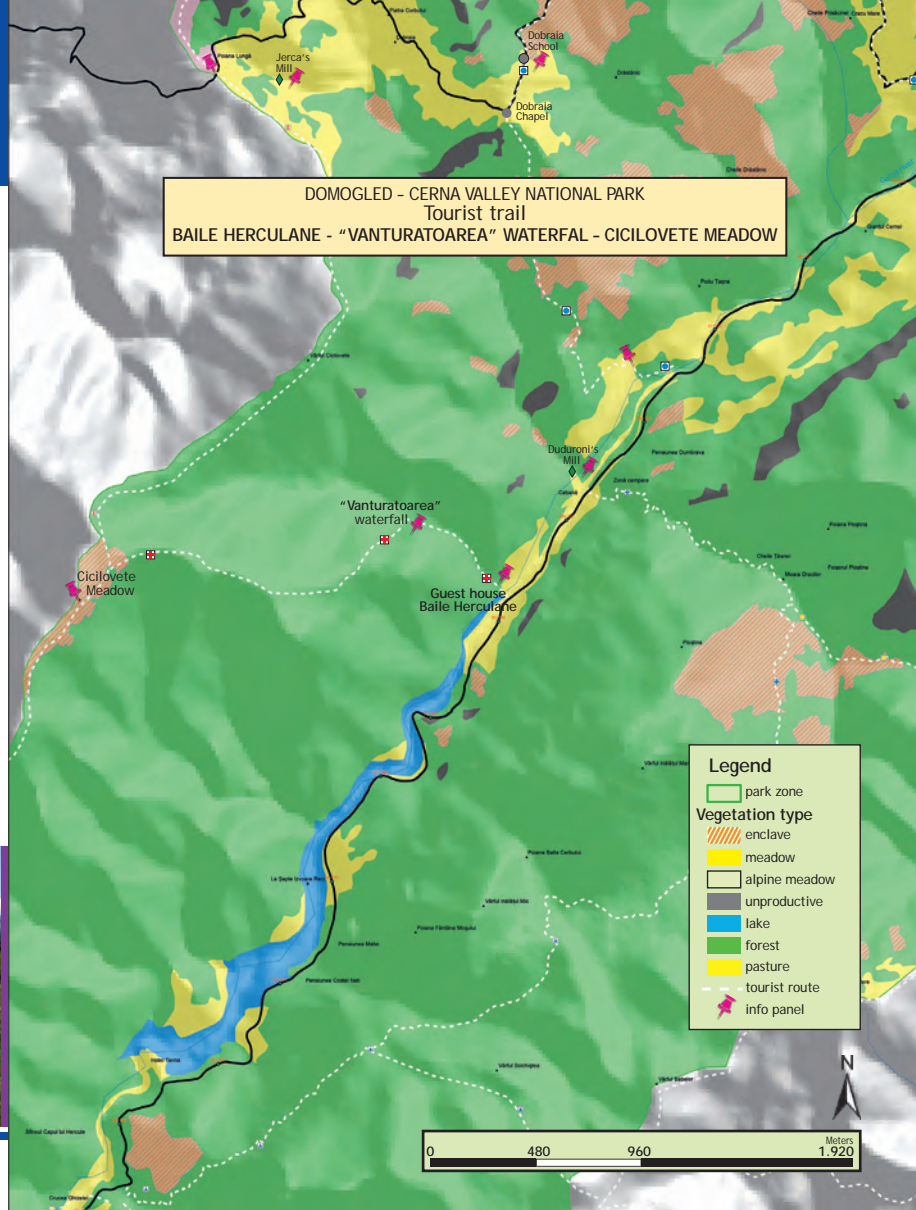
The climb continues through a young forest and in approximately 1 hour you can



Cicilovete



Planine Mehedinci





Cascada Vânturătoarea - cade liber și vertical de la aproximativ 40 m. Peretele peste care curge apa este un amfiteatru imens și se numește peretele Vânturătoarei. Foarte surprinzătoare și complet diferită este iarna. În locul în care cade apa, se formează un imens bloc de gheață, ca un cilindru sau bazin de gheață care înghite cascada. Cascada este una din cele mai frumoase din țară, dar datorită debitului variabil al pârâului, nu se poate vede în toată splendoarea ei pe tot parcursul anului.

reach the **“Poiana Cicilovete”** (Cicilovete Meadow). From this point, you can either return following the same path or keep on climbing the ridge trail, marked with red band, up to the „Poiana cu peri”, from where, following the blue triangle marking, you can reach the older centre of Baile-Herculane resort.

Beware of vipers! - *Vipera ammodytes*
It is reputed to be the most dangerous of the European vipers due to its large size, long fangs (up to 13 mm) and high venom toxicity. You can recognize them by the zig-zag line on their back and the triangle shaped head.

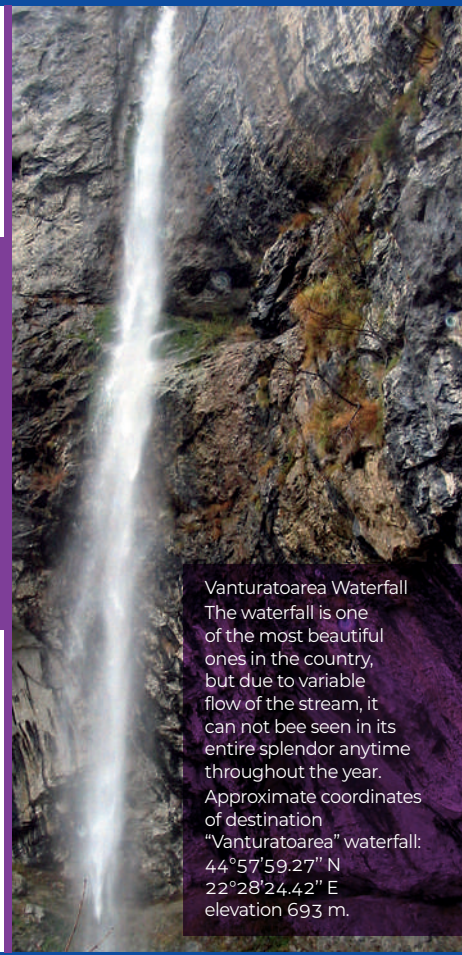


Viper, photo Alex Strugaru

Vanturatoarea Waterfall
- falls freely and vertically for about 40 m.

The wall behind the waterfall is a huge amphitheater called the Wall of Vânturătoarea.

The waterfall is very surprising and completely different during the winter. In the place where the water dropped, it forms a huge block of ice, an ice cylinder which swallows the cascade.



Vanturatoarea Waterfall
The waterfall is one of the most beautiful ones in the country, but due to variable flow of the stream, it can not be seen in its entire splendor anytime throughout the year.
Approximate coordinates of destination
“Vanturatoarea” waterfall:
44°57'59.27" N
22°28'24.42" E
elevation 693 m.

- interaction with the locals, who, by their way of life can offer each of passer a piece of history and tradition as well as respect for natural resources.
- interacțiunea cu localnicii, care, prin modul lor de viață, pot oferi fiecăruî trecător o bucată de istorie și tradiție precum și respect pentru resursele naturale.

Tourist trail:

Băile Herculane - Confluence of Cerna and Țasna Rivers - Dobraia Chapel - Prisăcina - Inelet - The "Stoian" Bridge - (km 19 DN 67 D)

Mountain massif: **Cerna Mountains**

Route type: **route to visit the hamlets, the operational water mills, the carstic relief and the spectacular gorges**

Route marking: **Blue point** - Length in km: **3,4** - Slope: **580 m**

Brief description of the trail:

Crossing the bridge over the Cerna River, we follow the route on the right. Passing by several country houses from the Drăstănic Hamlet, we continue our ascension towards the Arjana Peak. At this point the trail splits in two directions: one path goes ahead, over the ridge, to Bogăltin village, while the other path, which we have been following, bypasses the spring of Valea Prisăcina gill streamlet, descends on the left of the streamlet valley and goes beyond the Prisăcina Hamlet. Near

the Prisăcina Gorges, the path turns suddenly to the left towards the Inelet Hamlet.

Patraula

Domogled-Cerna Valley National Park is a protected natural area that combines natural elements of rare and spectacular beauty with tumultuous historical events whose echoes are found on the old patrol border.

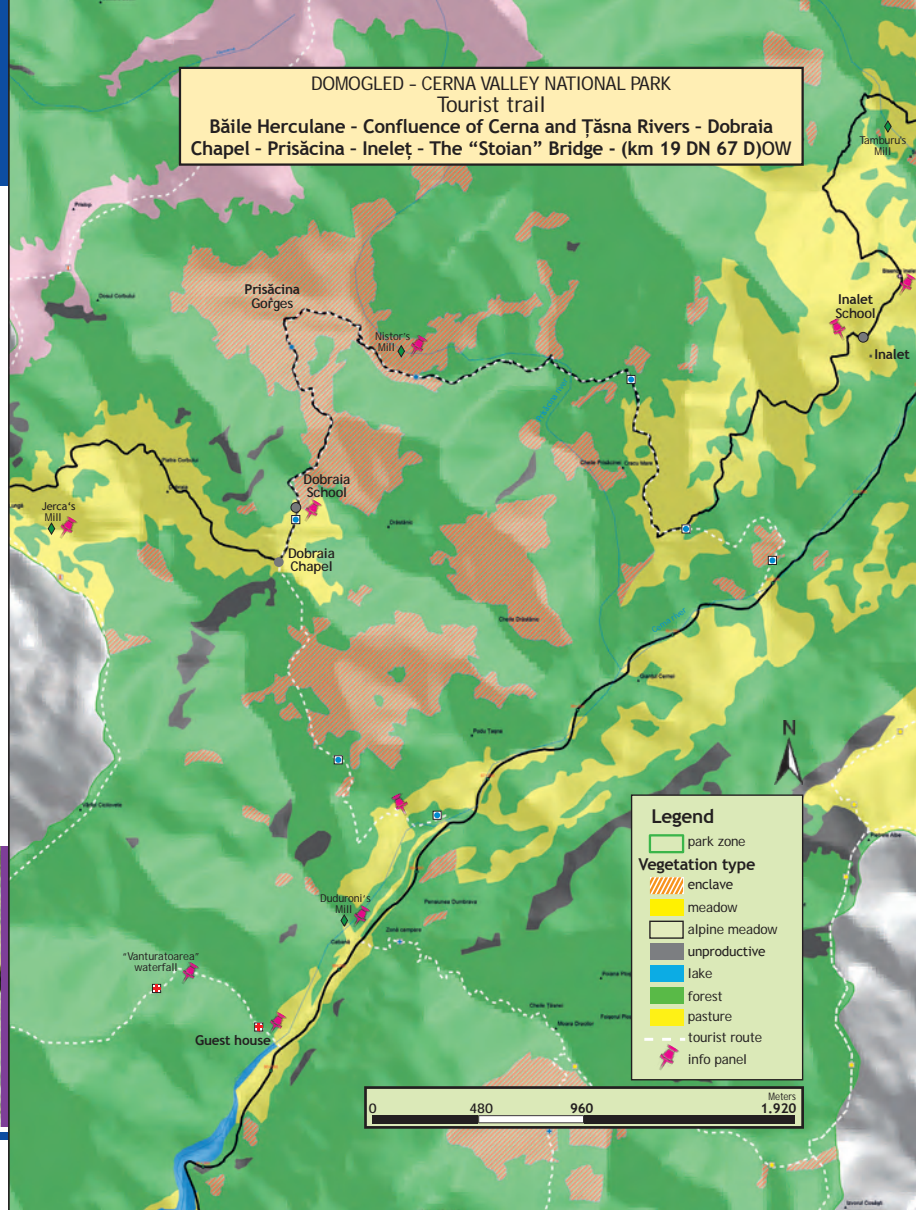
"Patraula" (the patrol) was settled by the Austrian border guards in the days of the rule of the Austro-Hungarian Empire. An inscription mentions that it opened in 1839. Cerna



Cerna Vally - photo, Richard Hoffman



Patraula





Domogled-Cerna Valley National Park

Domogled-Cerna Valley National Park is a protected natural area that combines natural elements of an undeniable variety and wealth with the cultural heritage and tradition of the communities living on its area.

This access trail to Scariaoara and Ineț hamlets offers a multitude of unique experiences and memorable moments to visitors.

Domogled-Cerna Valley National Park is characterized by several unique natural phenomena, namely:

- Cerna Valley totally integrates itself into the mountain landscape and separates two rows of mountains which are different in composition and landscape. It is a typical longitudinal valley which follows the tectonic line between Vâlcanului and Mehedinți mountains on the one hand and Masif Godeanu and Cerna Mountains on the other.
- Cerna Valley is characterized by a unique geological phenomenon called Cerna Fault with Jurassic limestone.
- The massive presence of limestone favored the formation of unique ecosystems.
- Thermal caves which are unique in Romania and very rare in the world rule for millennia this area of rare beauty,
- The existence of rare species of flora and fauna, endemic and Mediterranean.
- There are over 1,500 butterflies species, 45 % of Romania's butterfly fauna is concentrated here.





River, which crosses Domogled-Cerna Valley National Park on a distance of about 80 km, represented the border between the Austro-Hungarian Empire and Romanian Country. The Austrian border guards dug in the limestone rock to achieve this portion of the patrol which is also called "Piatra pușcată" (Blasted stone). On the right bank of Cerna River, near "Piatra pușcată" (Blasted stone), there are two thermal springs.

Scarite trail (Ladder)

Inside the Domogled-Cerna Valley National Park, the communities are represented by a locality named Cerna Sat, situated in Gorj County, and several hamlets belonging to Cornereva Commune, Caras-Severin County.

The hamlets accommodate the permanent households of the residents of Cerna Mountains. Among the hamlets with numerous households are Prisăcina, Dobraia, Ineț and Scărișoara. These hamlets are instantly charming their visitors by their special charm given by the fact that the inhabitants thereof live in harmony with nature, without benefiting from the

daily facilities offered by the modern life (electricity and running water).

A path, sporadically enriched by religious guideposts, provides the access to Scarisoara and Ineț hamlets. After climbing a moderate slope, we reach the bottom of a vertical wall on which four wooden staircases are anchored. These stairs were built by locals to shorten the distance between the hamlets and Baile Herculane Town. This gateway to the two hamlets is hardly recommended for those who have fear of heights.

The path offers spectacular sights over the Cerna Valley and the Mehedinti Mountains.



Ladder - Ineț

Ineț, Church

BRIEF HISTORY

Since the very beginnings of the hamlets on Cerna Valley until the church was built, the people of these isolated places used to walk tens of kilometers to Bogăltin (the nearest village with church), or Baile Herculane to attend church services, on the Sundays and holidays. The faith in God, have determined the residents of Ineț, Țațu and Scarisoara hamlets (belonging to Cornereva village) to build a church in 1973. Hence it appeared the Orthodox Church SCARISOARA - INEȚ, and the cemetery in its yard.



Ineț church

OBJECT DESCRIPTION

The church is a modest building, as is the life of these people, and quite small, looking more like a hermitage. The foundation is of stone masonry, walls of wooden beams coated in tin on the outside because in this region the snow is blizzard every winter and the snow banks reach 2-3 m in height. The church has only one tower wrapped also in tin. At the beginning the church interior was not painted and had only the Holy of Holy table. Since 2013, the isolating and painting works on the interior of the church and building the iconostasis were started. Since 2013 the church belongs to the monastery Herculane. The church's patron is the Virgin's Birth.

Ineț School

Ineț Primary School was built in 1964 on an area of 100 sqm. In the vicinity, on the right, is Ineț Community home.. Ineț Community home was built in 1970 on an area of 120 sqm.



PREVOD PREVODSilažak iz zaseoka



Ineț School

Scarite trail



Arjana summit (1512 m)

Even since early times, the richness and rarity of natural phenomena: geomorphological, speleological, flora, fauna, variety and beauty of the landscape of the west side of the Carpathians have drawn the attention of naturalists who discovered numerous natural rarities - particularly of flora and vegetation in Domogled-Cerna Valley National Park. **The first floral notes about Cerna Valley emerged from the early XVIIIth century.** All Domogled - Cerna Valley

National Park area is characterized as being the valley with the most varied and representative karst relief in Romania.

In these areas, the karst formations are represented by the gorge sectors of the valleys and slope forms. Among the most important gorges there are the ones cut in **Iuta, Prisacina, Drastanic, Bedina and Vanturatoarea valleys.**

The most important and biggest one among these is Prisacina gorge. Although only 400 m in length, these gorges have cascades of 518 m, towers relief, chimneys and arches. They are difficult to access and therefore are not recommended for visitors.

The caves near the hamlets are represented by a total of 149 caverns. Some of these which are remarkable by their mineralogical content or the presence of thermal manifestations are unique in the country and very rare in the world. Some examples are: Salitrari Cave and Ion Barzoni's Cave.



Arjana summit



Cave Ion Barzoni

Dobraia school

Dobraia School with classes I - IV was built in 1966 on a surface of 180 sqm. I. Pervulescu's household is located in school's neighborhood. The building has two bodies and a single floor.

Domogled-Cerna Valley National Park includes some of the hamlets belonging to Cornereva village, as the following: **Poiana lungă (Long Glade), Prisăcina, Dobraia, Ineț, Scărișoara, Țațu, Drăstănic, Cracul teiului, Cracu mare, Slătinic, Gura Iuții, Zmogotin.**

The communities contribute to the attractiveness and value of the protected area by their traditional customs, cultural richness and hospitality.

This route gives us the chance to interact with the locals, who, by their way of life can offer each of us a piece of history and tradition as well as the ancestral respect for natural resources. It is a way to gain new experiences in a place where the amenities and comforts of the modern life have not yet penetrated. However, the community members belonging to the

hamlets that compose the Cornereva Commune live in harmony and peace with the natural resources offered by this unique place.

Cracul Împărătesei (The Queen's Shank)

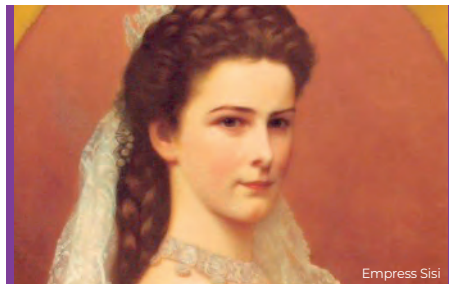
The "Cracul Împărătesei" is located in the south-west border area of the Domogled - Cerna Valley National Park. The climb to the Poiana Lungă [a glade that rises on the two Bilene, to the Arjana peak] starts nearby the shelter of Jucă (Nicolae Novăcescu).

By its name, the "Cracul Împărătesei" is an undisputable proof of the Empress Elisabeth's (the famous Sisi), passing through these wonderful places on her way to Poiana Lungă/Long Glade, which was her meditation and relaxation halt.

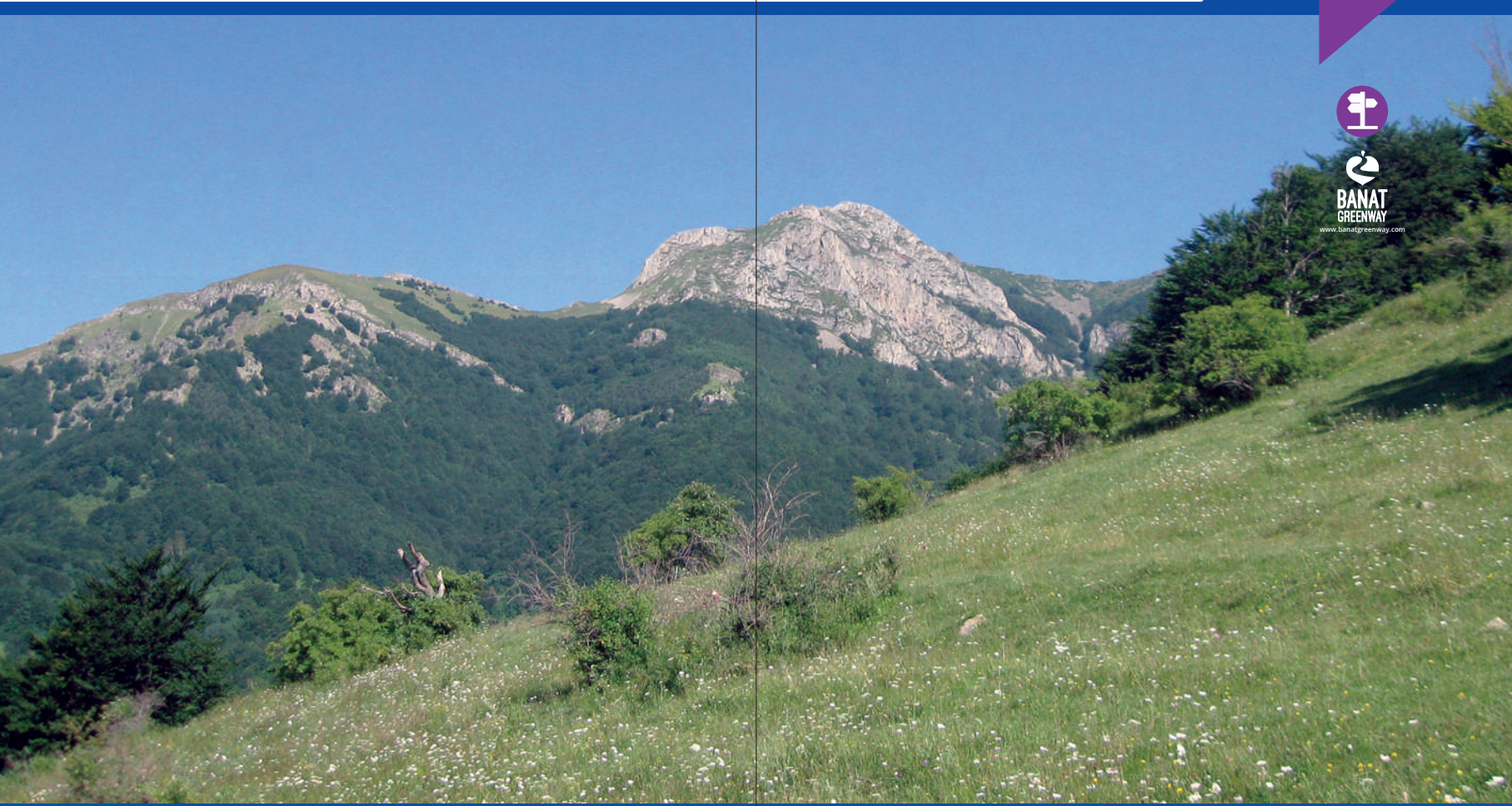
Here, in the silence of nature and the scent of the freshly blooming lilac, seated on a rock, the Empress Sisi wrote 82 poems inspired by the emotions she experienced admiring the eagles in their flight towards the sun.



Dobraia



Empress Sisi



**BANAT
GREENWAY**

www.banatgreenway.com



Tamburu mill

WATERMILLS

The watermills were built by locals for their own households. The first mills were built around 1950. The mills were named after the name or nickname of those who built them.

The locals are proud of the flour of their mill because it has a unique taste because the wheels moved by water grind slowly, unlikely the electrically operated wheels.



Tamburu mill

On the Domogled-Cerna Valley National Park area, near the hamlets belonging to Cornereva village, the watermills mainly located on Arjana, Prisacina, Drăstănic, Ineț, Iuta, Bedina streams - all tributaries of Cerna river.

Duduroni's Mill is located on Bedina creek near the national road DN 67D Băile Herculane - Baia de Arama. The year of its construction is unknown, but it was built by Marcu Nicolae.

Tamburu's Mill is located on Iuta creek. The year of its construction is unknown, but it was built by Rădulescu Lazăr and Vișescu Ion.

Nistor's Mill is located on Prisăcina creek near the village road Bogăltin - Poiana Lungă - Dobroia - Prisăcina and Talpeș Nistor's house, who also built it in 1965.

Jerca's Mill is located on Arjana creek near the village road Bogăltin - Poiana Lungă - Dobroia. The year of its construction is unknown, but it was built by Novăcescu Nistor.



Nistor mill

Cornereva Mill Complex - *Historical Monuments* (LMI Code: CS-II-a-B-11101)

This ensemble includes the mills on the river valleys:

Belareca, Camena, Ramna, Zmogotin and Obita, built by the inhabitants of Cornereva commune at the beginning of the 20th century.

Watermills from the Mill Complex in Cornereva, which includes mills:

- Lazarus Boasca's Mill** on the Belareca river valley,
- Nicolae Nemeș's Mill** on the Camena River Valley,
- Popeșilor Mill** on the Ramna River Valley,
- Mill on the Bridge** on the Ramna River Valley,
- Nistor Cherescu's Mill** on the Zmogotin River Valley,
- Nicolae Brânzei's Mill** on the Zmogotin River Valley,
- Adam Cherescu's Mill** at the confluence of the Camena and Zmogotin rivers,
- Poloiești Mill** on the Obita River Valley.



Duduroni mill



Jerca mill



Duduroni mill

Welcome!

VISITATION RULES

1. Choose the right marked trail depending on your physical strength;
2. Do not leave the marked trails,
3. Respect and preserve the nature;
4. Do not camp outside the designated camping areas;
5. Do not set fire, except where it is allowed;
6. Do not destroy the informational panels;
7. Do not litter.

Thanks!

Autumn in Domogledu, photo Gabriel Lazăr



Contact:

Comuna Cornereva

Cornereva, str. Principală, nr. 130
Cornereva, Caras Severin, Romania
E:contact@primaria-cornereva.ro

T:+40 0372-930017

www.primaria-cornereva.ro



BANAT GREENWAY CORRIDOR
Connecting People to Nature and Culture.
www.banatgreenway.com



Lead Beneficiary: Cornereva Hall (RO)
Project Partners: Municipality of Kovačica (SRB)
Assoc."Friends of Pancevo" (SRB)
Total project budget: 528.952,20 EUR
EU funding: 449.609,37 EUR
Implementation period: 22.12.2020 - 20.12.2022

Interreg - IPA CBC
Romania - Serbia



Cooperation beyond borders

Interreg-IPA Cross-border Cooperation Romania-Serbia Programme is financed by the European Union under the Instrument for Pre-accession Assistance (IPA II) and co-financed by the partner states in the Programme.



Attractiveness for
sustainable tourism

Project title: BANAT GREENWAY CORRIDOR - Connecting People to Nature and Culture (eMS Code: RORS-372)
Material editor: Assoc."Friends of Pancevo"
Publishing date: March 2022

The content of this material does not necessarily represent the official position of the European Union.
In case of any complaints, contact: romania-serbia@mdrap.ro